



## **JRC Smart Shipping**

**JRC offers not only Antenna, but  
also Solutions for Shipping**

**April. 2020**

**Japan Radio Co. Ltd.**

# Introduction

In the marine field, with the advent of high-speed satellite communication services for ships and the advent of flat-rate plans, internet connection has become easier.

By sharing information between ships and land and effectively utilizing such information, we are creating an environment in which we can realize a variety of solutions.

JRC with the world's leading satellite communications technology as its background, we will provide an environment where ships and land are always connected.

- ✓ **Made in Japan quality by JRC original design and production**
- ✓ **Using Ka band / L band satellite communication allow stable and high-speed communication with global coverage coverage a part of polar area**
- ✓ **All in one package contains antenna, modem, network units, cables and power unit by JRC**
- ✓ **Flexible subscription plans meet your needs for traffic capacity**
- ✓ **Easy installation with auto-negotiation between Antenna and Satellite for initial setting**



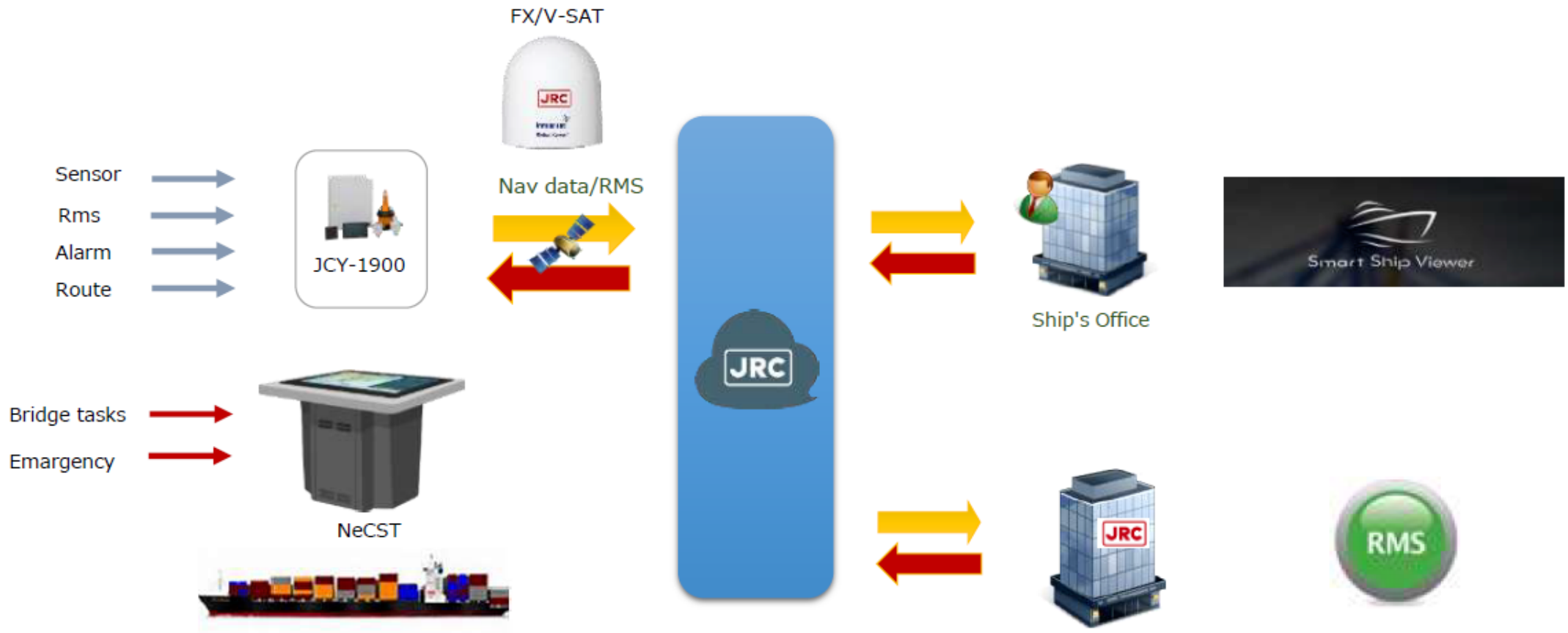
## What is J-Marine Cloud?

This service aims to be safe, secure, and smart operation management by realizing the visualization of ships based on navigation data sent regularly from ships.



## What is J-Marine Cloud?

- Smart Ship Viewer for customer
- Remote Maintenance System for JRC service staff





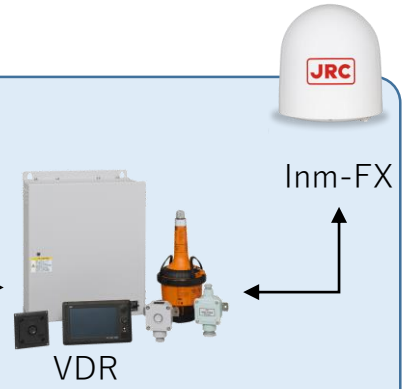
Auto-update sensor and Remote Maintenance data periodically. (per 10 min to 1day)



Use can access to J-Marine Cloud via Web application

## <Navigation Bridge>

- GPS/GPS compass
- Echo sounder
- Speed log
- AIS
- NAVTEX
- VHF
- MF/HF
- Radar
- ECDIS
- BNWAS
- Weather FAX
- Inmarsat-GX/FB/C



## <Engine Room>

- Propeller/shaft RPM
- Engine telegraph
- Rudder angle
- Thruster

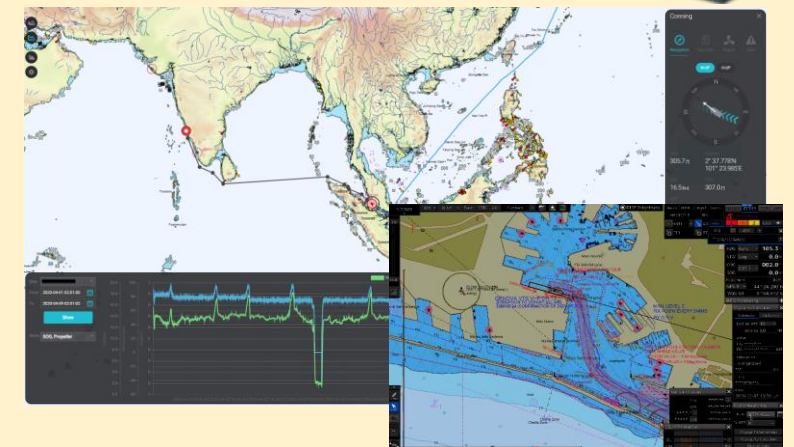
## <JRC service center>

Date	System Error	Date Time	Location	Longitude	Sentence	Talker ID	MISC No.	Comment
2018/09/26 00:36:50	2018/09/26 00:36:50	34.28.349	133.56.15E	SPRCM	VR	20	AX3A.AA.XXX.XXX	.....760
2018/09/26 00:36:50	2018/09/26 00:36:26	34.28.349	133.56.15E	SPRCM	VR	21	JCY-0905.M63236.M630541.M630517.M630518	.....761
2018/09/26 00:36:50	2018/09/26 00:36:26	34.28.349	133.56.15E	SPRCM	VR	23	.....M630518	.....775
2018/09/26 00:36:50	2018/09/26 00:36:26	34.28.349	133.56.15E	SPRCM	VR	24	.....744	.....744
2018/09/26 00:36:50	2018/09/26 00:36:26	34.28.349	133.56.15E	SPRCM	VR	25	05.01.01.00.01.01.01.01.00.001.176	.....745
2018/09/26 00:36:50	2018/09/26 00:36:26	34.28.349	133.56.15E	SPRCM	VR	26	05.00.00.01.01.001.176	.....746
2018/09/26 00:36:50	2018/09/26 00:36:26	34.28.349	133.56.15E	SPRCM	VR	27	.....747	.....747
2018/09/26 00:36:50	2018/09/26 00:36:27	34.28.349	133.56.15E	SPRCM	VR	28	.....748	.....748
2018/09/26 00:36:50	2018/09/26 00:36:27	34.28.349	133.56.15E	SPRCM	VR	29	VDS1:178011.1022178001.1.1022178006.M630518	.....749
2018/09/26 00:36:50	2018/09/26 00:36:27	34.28.349	133.56.15E	SPRCM	VR	30	VDS1:178006.M630518.78006.74C	.....750

## Remote Maintenance System

- Monitoring of JRC equipment status
- Analysis of alert / logging data
- Remote update support (MFD, VDR etc...)

## <Operation office>



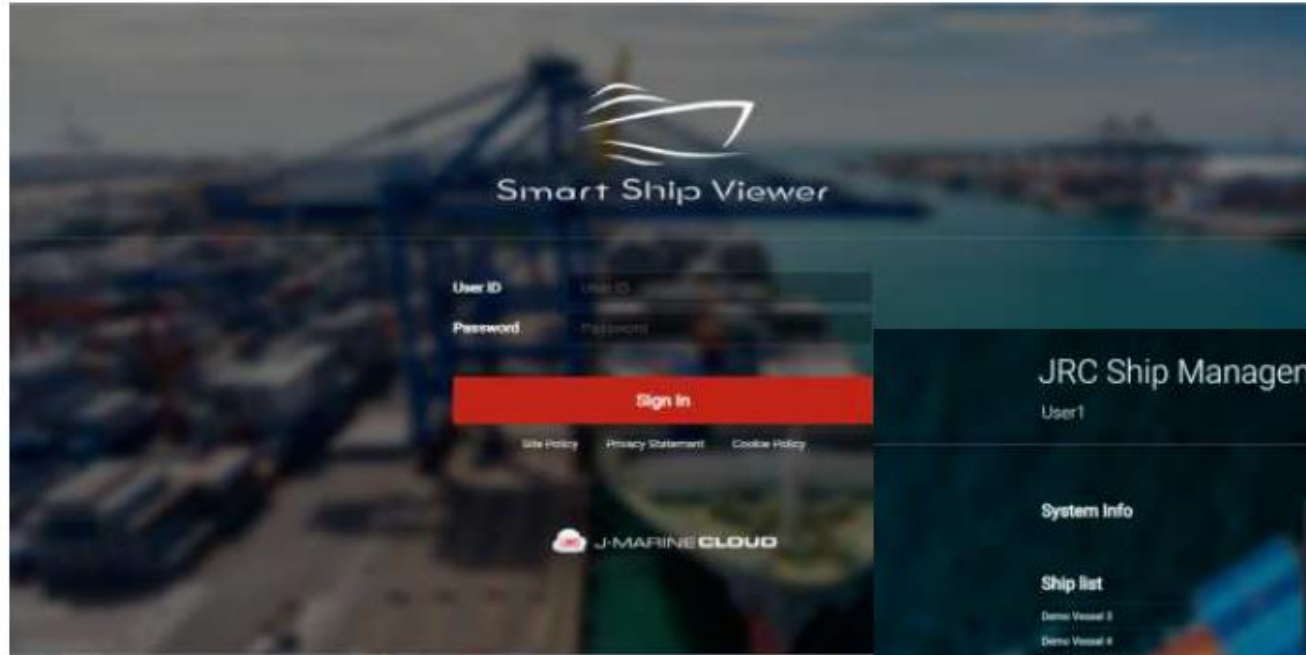
## Smart Ship Viewer

- Trend monitoring of sensor data from VDR
- Navigation alert on JRC equipment (BAM info)
- Active route sync with JRC ECDIS
- Weather forecast
- VDR remote download
  - \* Downloaded data can be play backed on VDR playback software.

JRC VDR (JCY-1900) or J-Marine NeCST installed ships can be started this service with **No additional hardware** and visualized on the Web.

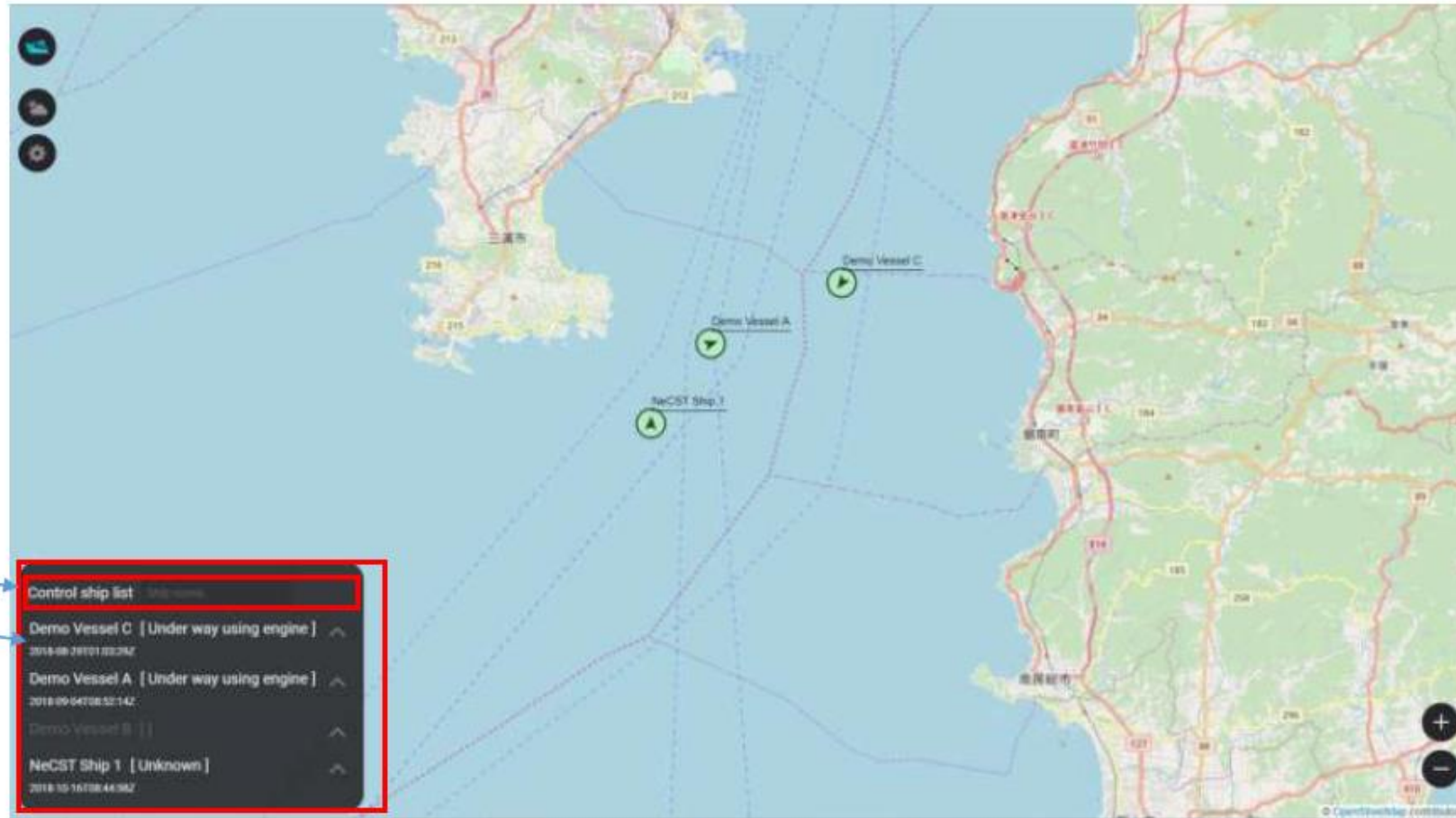


## Web Login Screen



## Management ship monitoring

Displays the latest location and status of each management ship on the map. It is based on the information from VDR and/or J-Marine NeCST.



Ship Search

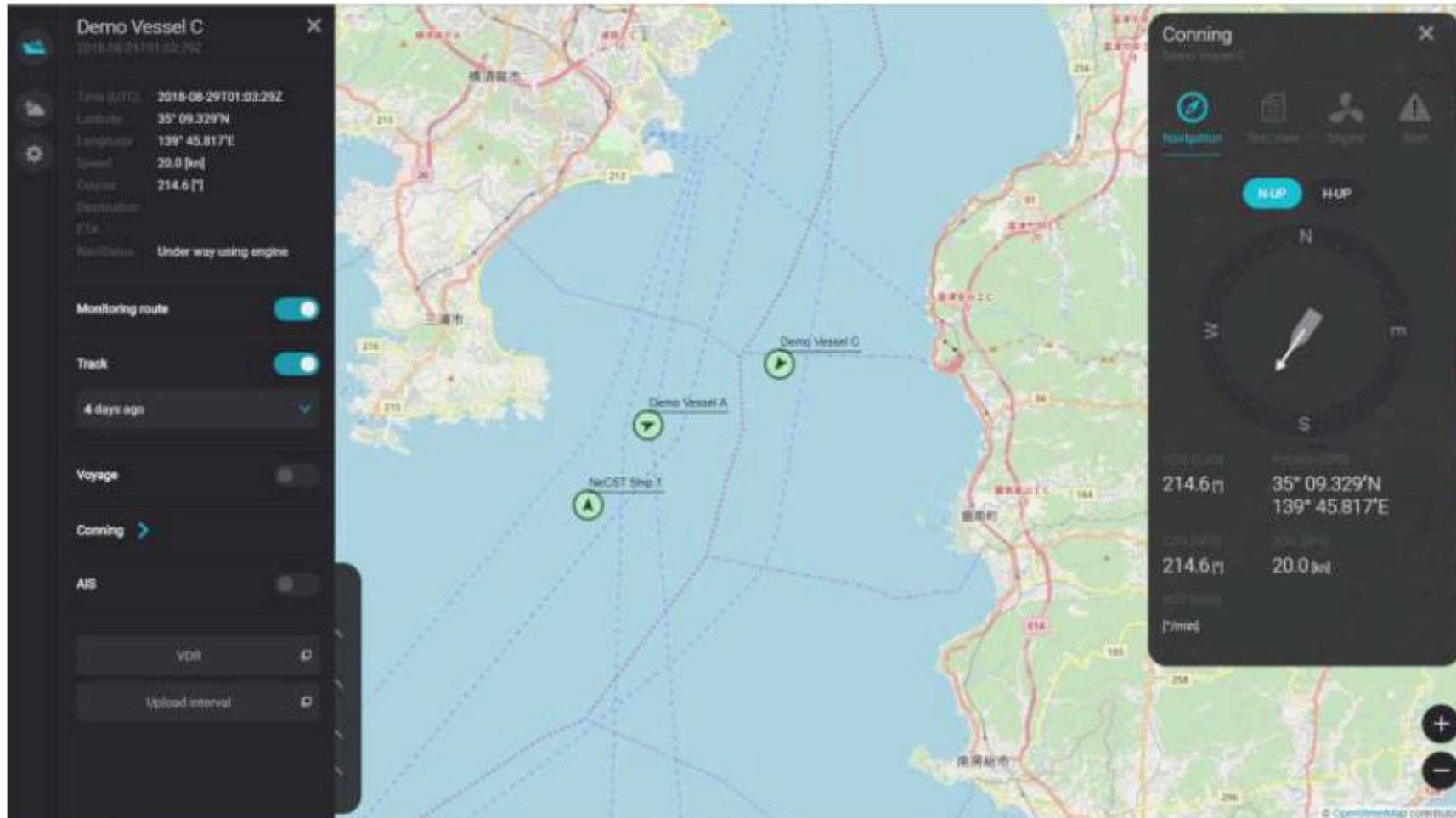
List of ships

※Management ship icon occursALC/ALF(RmsColor changes depending on the corresponding ship only)



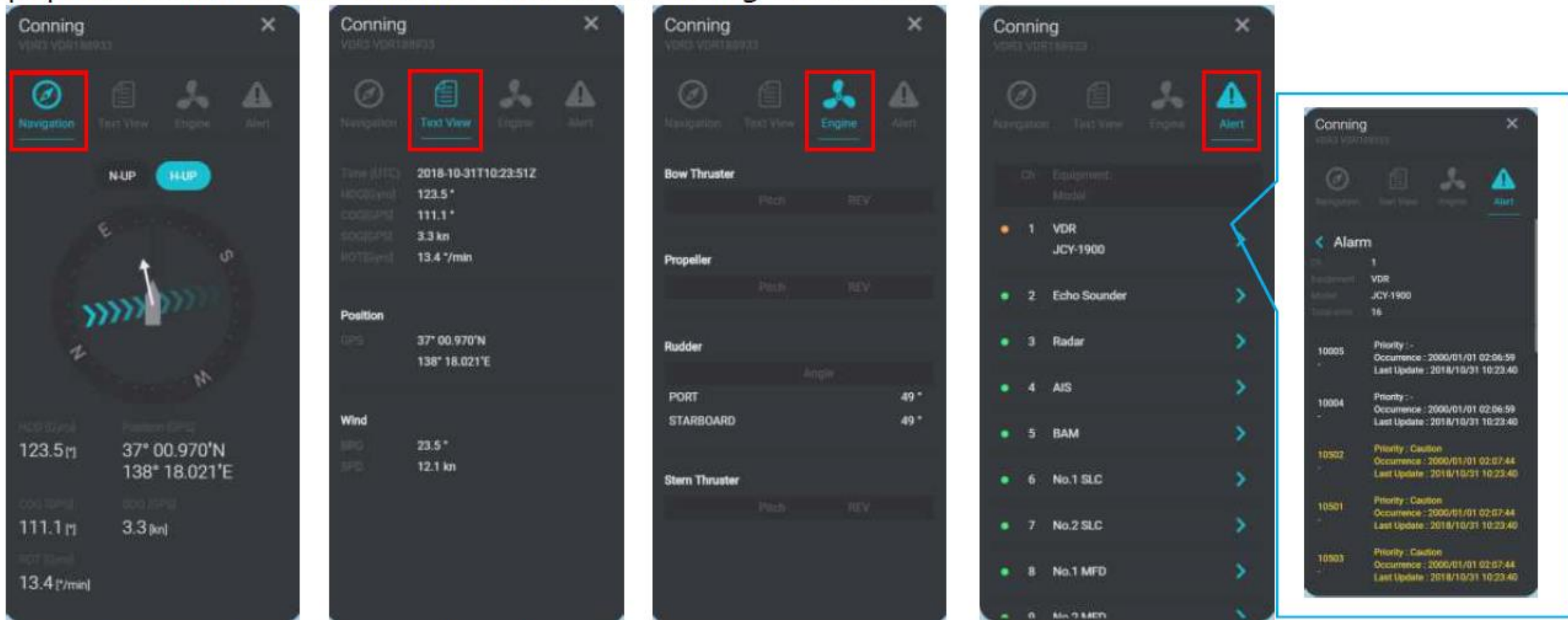
## Route monitoring/Track display

Displays each ship's monitoring route from JRC ECDIS JAN-9201/7201 and track up to past 7 days.



## Conning information

Displays the status of each management ship's voyage and equipment alarm information that is occurring on board.



※The display contents are different depending on the equipment installed.

**KIRANA NAWA** ✕  
2020-04-10T06:00:04Z

Time (UTC) 2020-04-10T06:00:04Z  
Latitude 12° 58.110'N  
Longitude 74° 41.719'E  
Speed 0.1 [kn]  
Course 170.3 [°]  
Destination MANGALORE INDIA  
ETA 04/07 13:00  
NavStatus At anchor

Monitoring route

Track

7 days ago ▾

Resolution  
Low  High

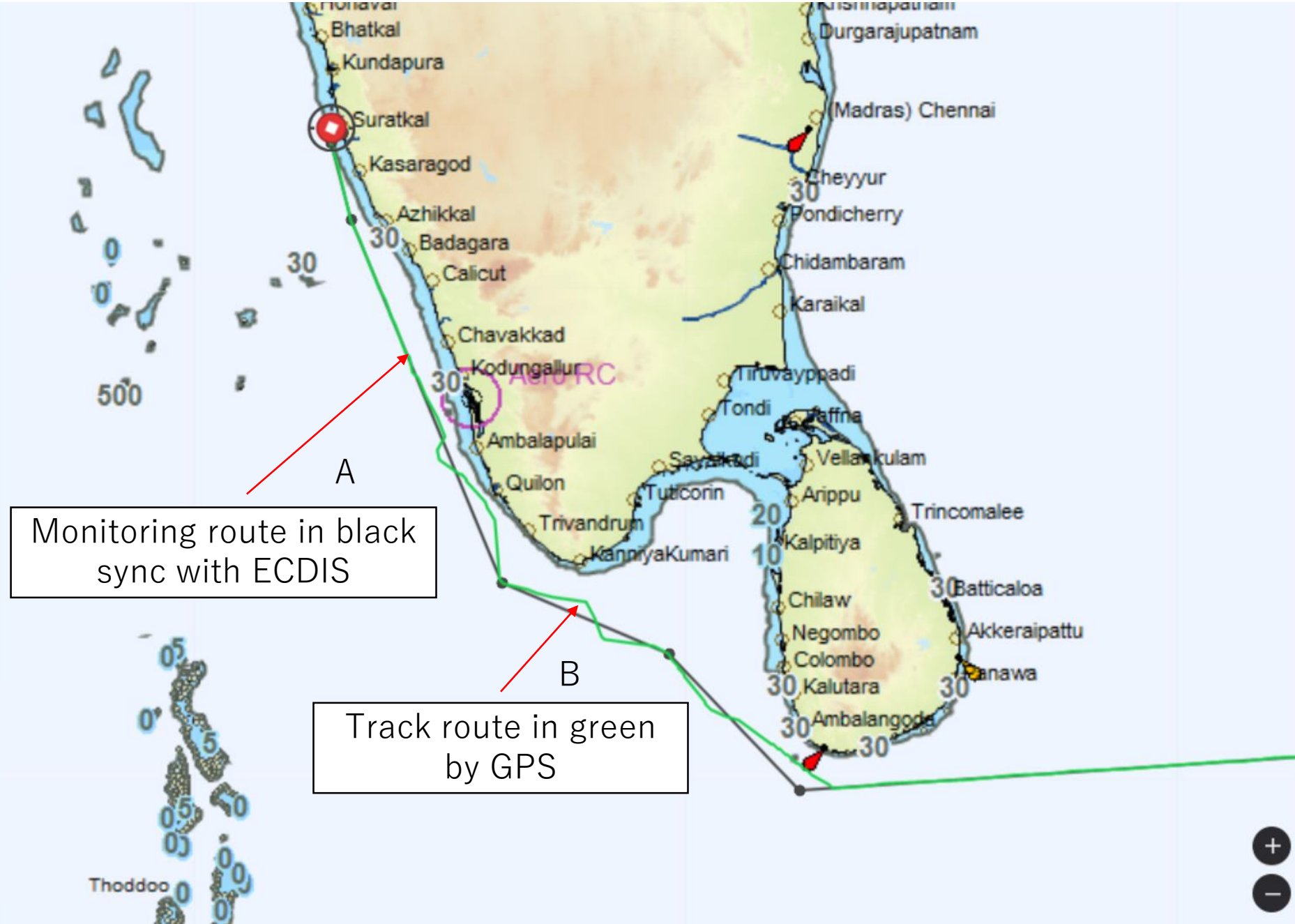
Voyage

Conning ➤

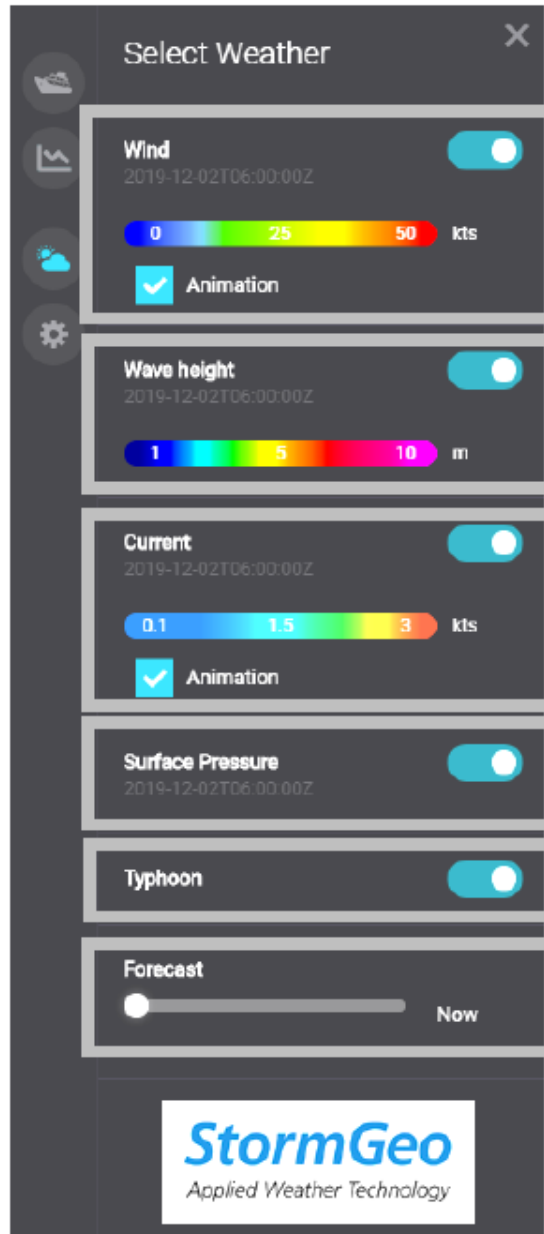
AIS

VDR Data Request ⊞

Upload interval ⊞



## Weather information



**Wind** : Show wind direction / wind speed.

The wind direction and wind speed display can be changed with the Animation check box.

**Wave height** : Show wave height.

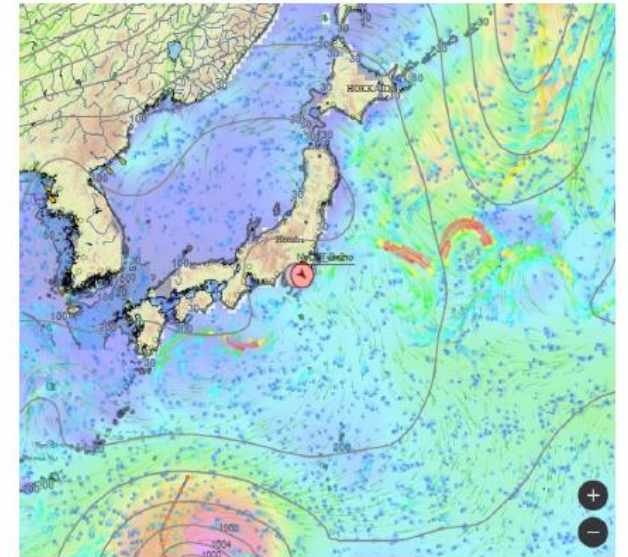
**Current** : Show current.

The current display can be changed with the Animation check box.

**Surface Pressure** : Show surface pressure.

**Typhoon** : Show typhoon.

**Forecast** : Weather forecast information 72 hours ahead is shown.



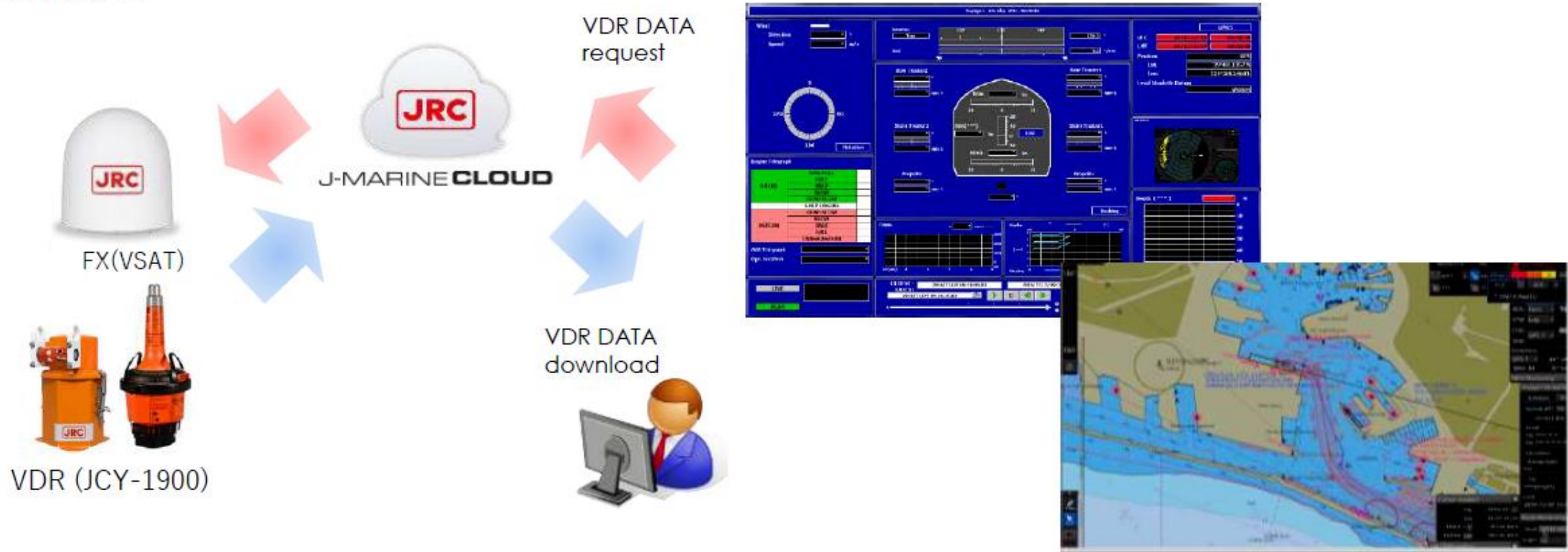
Example: Weather on



Example: Weather off

## VDR data download

VDR data can be downloaded remotely and played back on a PC with VDR playback software.



VDR Playback software screen

Voyage 1 JRC-TATSUMIMARU IMO : 1350053

**Wind**

Direction  °

Speed  m/s

Relative

Heading  °

ROT  °/min

GPS1

UTC

LMT

Position

Lat.

Lon.

Local Geodetic Datum

STW (LOG1)  kn

SOG (LOG1)  kn

Propeller  %

min-1

°

Voyage

**Engine Telegraph**

AHEAD	NAV.FULL	
	FULL	
	HALF	
	SLOW	
DEAD SLOW		
STOP ENGINE		
ASTERN	DEAD SLOW	
	SLOW	
	HALF	
	FULL	
CRASH ASTERN		

SUB Telegraph

Ope. Location

Graph axes: X-axis (0 to 360), Y-axis (0 to 40)

Scale: 200, 250, 30 (min)

PLAY

OLDEST - LATEST  -

12 hours All

Voyage	Alarm Status	AIS	Radar/ECDIS
		Print	Setup

2020-04-10T06:33:22Z

Time (UTC) 2020-04-10T06:33:22Z  
Latitude 34° 30.081'N  
Longitude 133° 44.149'E  
Speed 0.1 [kn]  
Course 227.5 [°]  
Destination JP MIZ A  
ETA 04/10 01:00  
NavStatus Moored

Monitoring route

Track

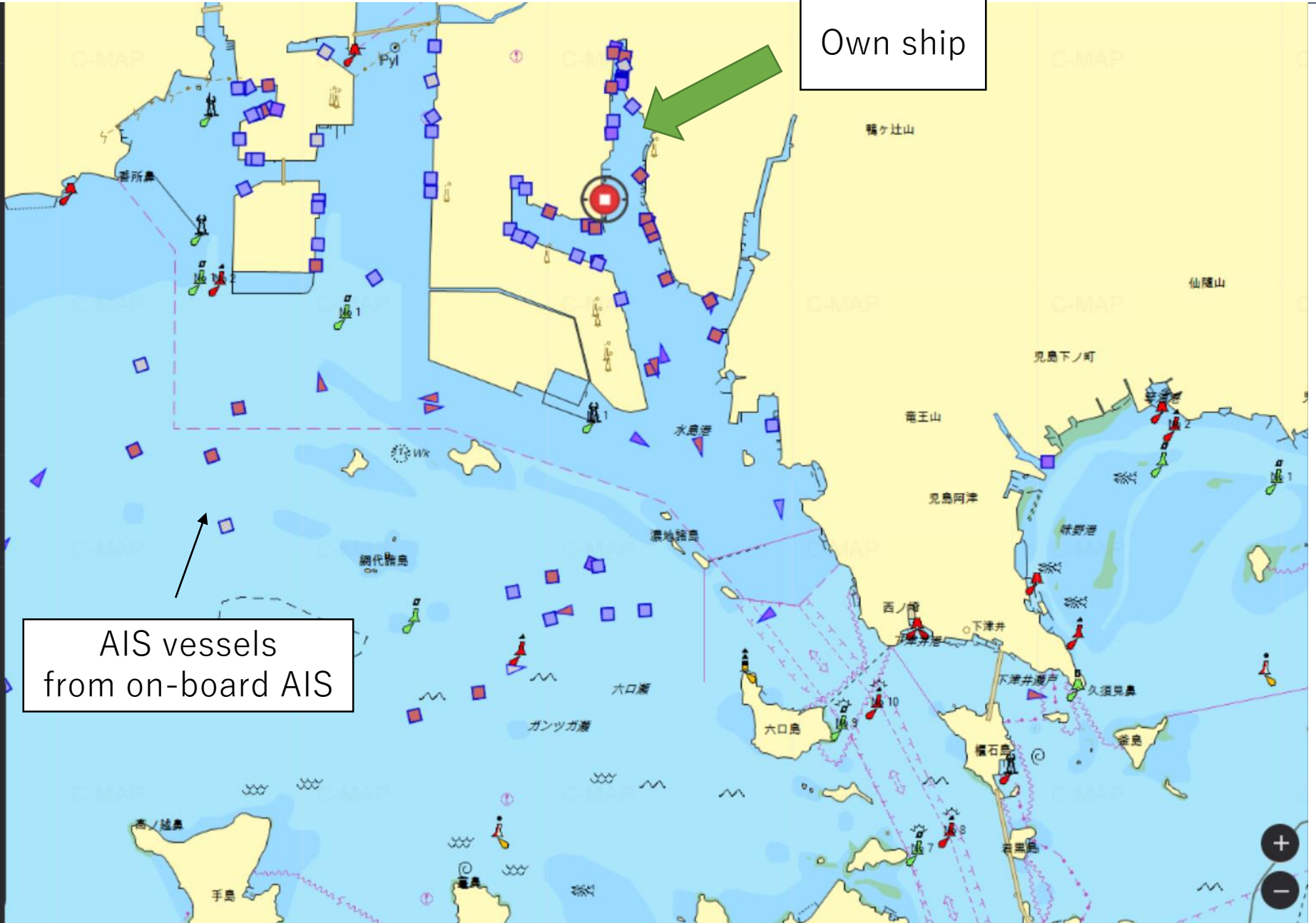
Voyage

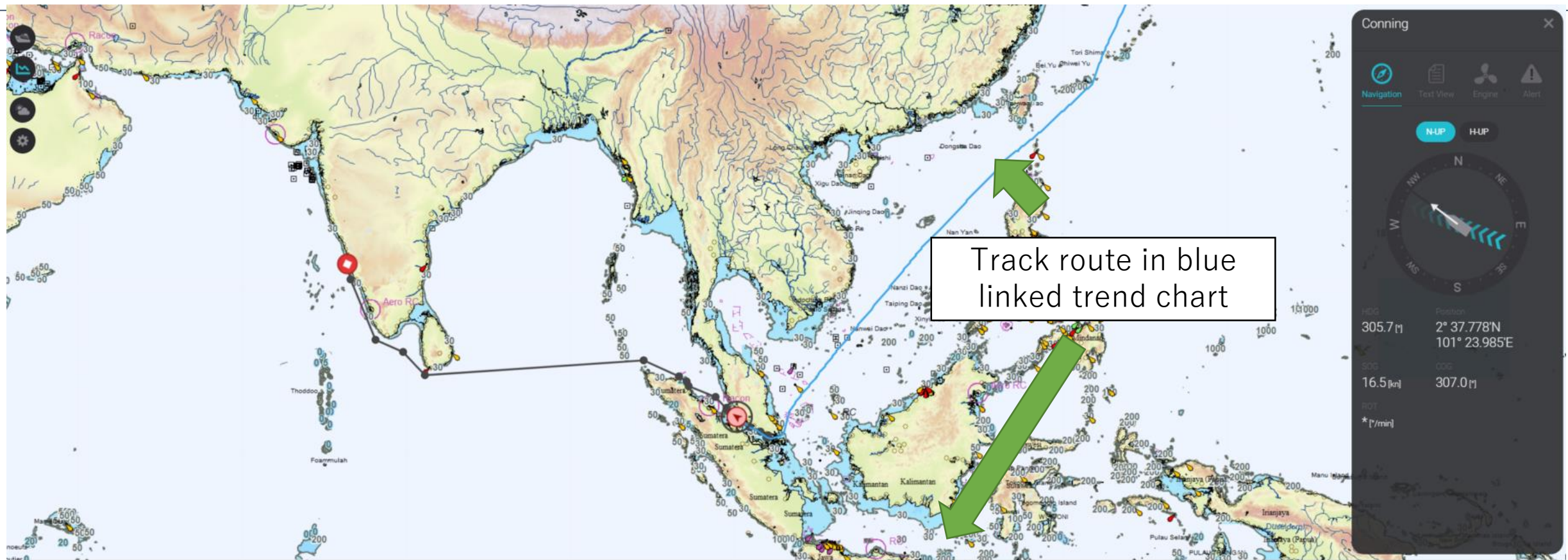
Conning

AIS

VDR Data Request

Upload interval





Speed, Course, Wind speed/direction, Rudder angle, Propeller/Shaft RPM and Thruster are available





What JRC can provide is

- Network for always-on connection between land and ships
- Advanced maintenance utilizing Remote Maintenance System
- "Ship's Visualization of ships" with VDR data
- Land-ship cooperation function of equipment (VDR, ECDIS, NeCST)

JRC keeps to expand cloud services for the future to provide "new value" together with new technology.

# Summary

- No additional hardware is necessary
- Just connect VDR with VSAT(Inmarsat FX) and ready to start
- Easy to get VDR data remotely instead of visiting on-board to bring out the data by engineer
- RMS with J-Marine Cloud is going to Condition Based Maintenance
- High accuracy and frequency position tracking
- Comparison of “Monitoring route” (planned by ECDIS) and “Track” (Actual report by GPS) simply find out sailing result

Thank you for your attention.