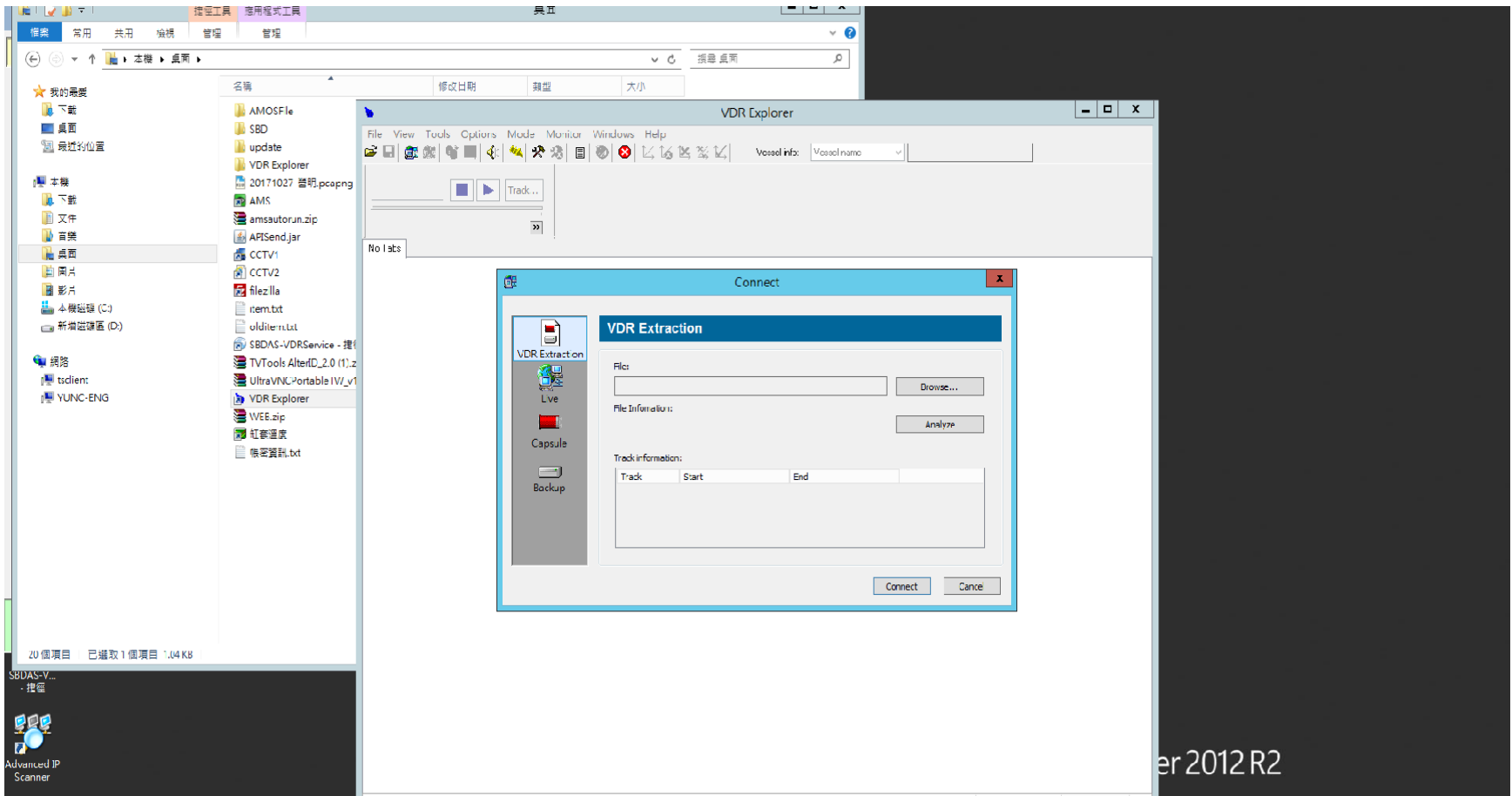
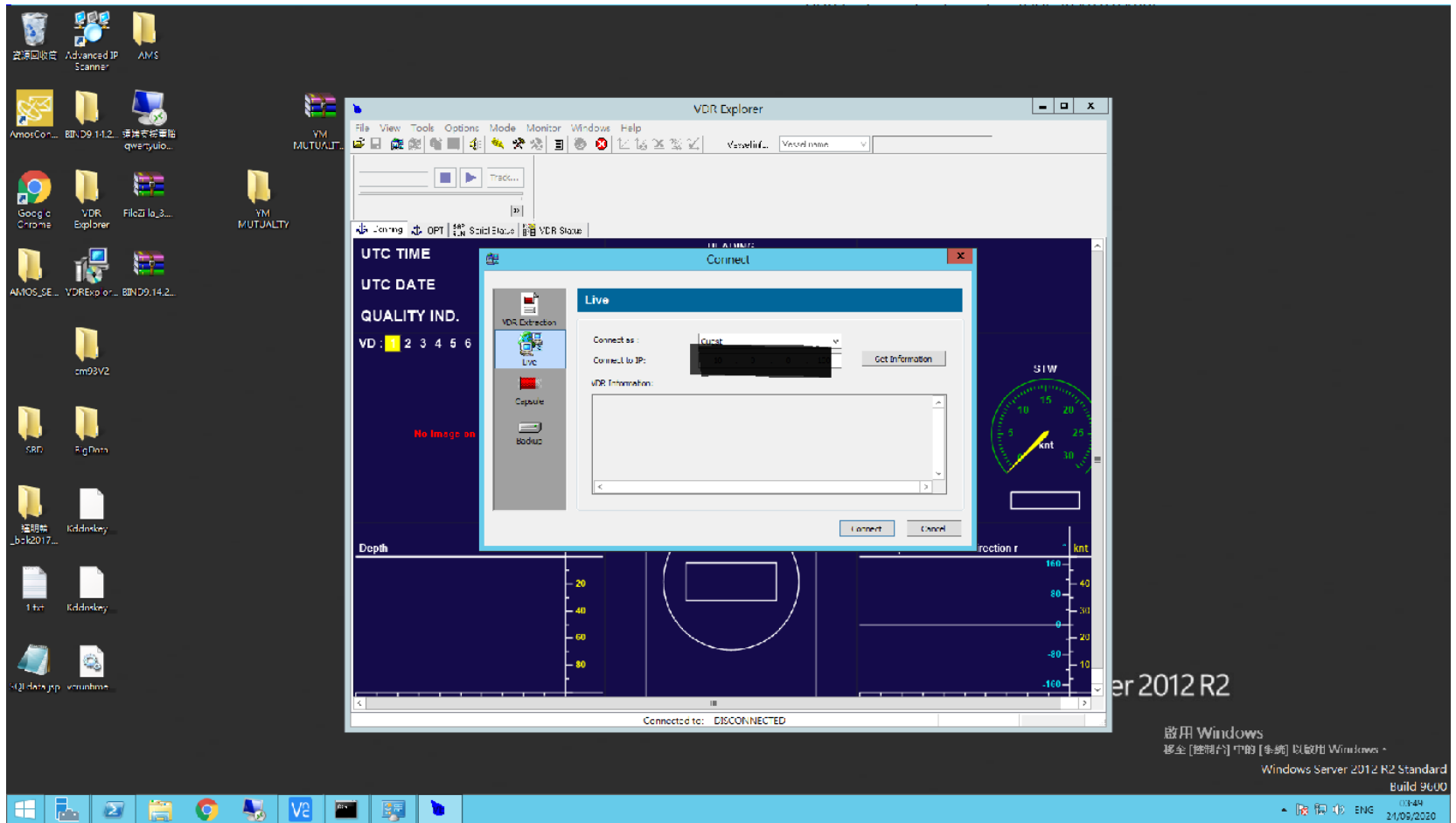


陽明海運VDR現況實務分享

- 陽明大部分屬輪採用Sperry-Voyager Master II & III
- 使用VDR Explorer觀看儲存VDR紀錄
- 屬輪建置大數據主機可於辦公室遠端連線觀看Live VDR畫面





VDR Explorer - Configuration (LIVE: IP 10.0.0.100)

File View Tools Options Mode Monitor Windows Help

Vessel info: Vessel name | YM MUTUALITY

24/09/2020 03:36:27

Conning Page Information 1 | Conning Page Information 2 | ALARM PAGE | VDR Status Tab | Data Log | Serial Status Tab | RADAR | Main Engine

WIND RELATIVE

WIND DIR
233 Deg

WIND SPEED
2 Knt

GYROCOMPASS
92° ROT

Doppler Log
0Knot
19Knot

RUDDER ANGLE
PORT 45 | STBD 45

DGPS POSITION

GGA LATITUDE N 45°25.748
GGA LONGITUDE W 170°45.630
GGA UTC 03:36:27
GLL LATITUDE N 45°25.750
GLL LONGITUDE W 170°45.640
GLL UTC 03:36:26

ECHOSOUNDER

Depth: 0m to -800m

Water Tight Door Sys

- 2nd Passage Way Por CLOSED
- 2nd Passage Way Stb OPEN
- NO.1 HOLD PORT OPEN
- NO.2 HOLD PORT OPEN
- NO.3 HOLD PORT OPEN
- NO.4 HOLD PORT OPEN
- NO.4 HOLD STBD OPEN
- NO.5 HOLD PORT OPEN
- NO.6 HOLD PORT OPEN
- ENGINE ROOM PORT CLOSED
- ENGINE ROOM STBD CLOSED
- NO.7 HOLD PORT OPEN
- NO.8 HOLD PORT OPEN
- 2nd Passage Way Por CLOSED
- 2nd Passage Way Stb OPEN
- BOW THRUS. RM OPEN
- BOSUN STORE OPEN
- PIPE DUCT OPEN
- BNWAS SYSTEM CLOSED
- BNWAS POWER FAIL CLOSED
- BNWAS CRESWS ALARM OPEN
- M/E ECS POWER FAILUR CLOSED
- M/E BU POWER FAILURE CLOSED

啟用 Windows
移至 [控制台] 中的 [系統] 以啟用 Windows。

Connected to: Remote Address: IP10.0.0.100 | Playing... | 03:46 24/09/2020